

NO	QTY	DESCRIPTION	MODEL NUMBER			STANDARD SEAL KIT
			L1-4032-00-X-US	L1-4040-00-X-US	L1-4050-00-X-US	
1	1	NUT, JAM, HEX	21-5100-01	21-5100-02	21-5100-03	
2	3	SPRING, COMPRESSION	23-3500-85	23-3500-86	23-3500-86	X
3	3	BALL, TUNGSTEN-CARBIDE	23-6500-09	23-6500-10	23-6500-10	X
4	2	O-RING, PLUG SEAL	39-0510-79	39-0510-79	39-0510-80	X
5	1	O-RING, CAP SEAL	39-0510-82	39-0510-83	39-0510-84	X
6	2	O-RING, MANIFOLD SEAL	39-0510-87	39-0510-87	39-0510-88	X
7	1	SEAL, WIPER, SNAP IN	39-0530-42	39-0530-43	39-0530-45	X
8	1	SEAL, STEP, ROD	39-0560-02	39-0560-03	39-0560-05	X
9	1	SEAL, CAP, PISTON	39-0560-22	39-0560-23	39-0560-24	X
10	2	PLUG, SOCH	43-0680-04	43-0680-04	43-0680-06	
11	1	PLUNGER, LEFT HAND (SHOWN)	81-4001-32	81-4001-33	81-4001-34	
	1	PLUNGER, RIGHT HAND	81-4001-42	81-4001-43	81-4001-44	
	1	PLUNGER, STRAIGHT	81-4001-22	81-4001-23	81-4001-24	
12	1	CAP, LC/SC, 7MP _a	81-4001-52	81-4001-53	81-4001-54	
13	2	PLUG, MANIFOLD, 7MP _a	81-4002-00	81-4002-00	81-4002-01	
14	3	PIN, STOP ,BALL, METRIC	81-4002-02	81-4002-03	81-4002-03	X
15	1	SENSOR, ULTRASONIC, M12, 1m	29-7402-00	29-7402-00	29-7402-00	
16	1	SENSOR, FACE SEAL (STANDARD)	43-0000-40	43-0000-40	43-0000-40	
N/A	N/A	SEAL KIT (STANDARD)	L6-0143-20	L6-0144-00	L6-0145-00	NOTED

B

B

A

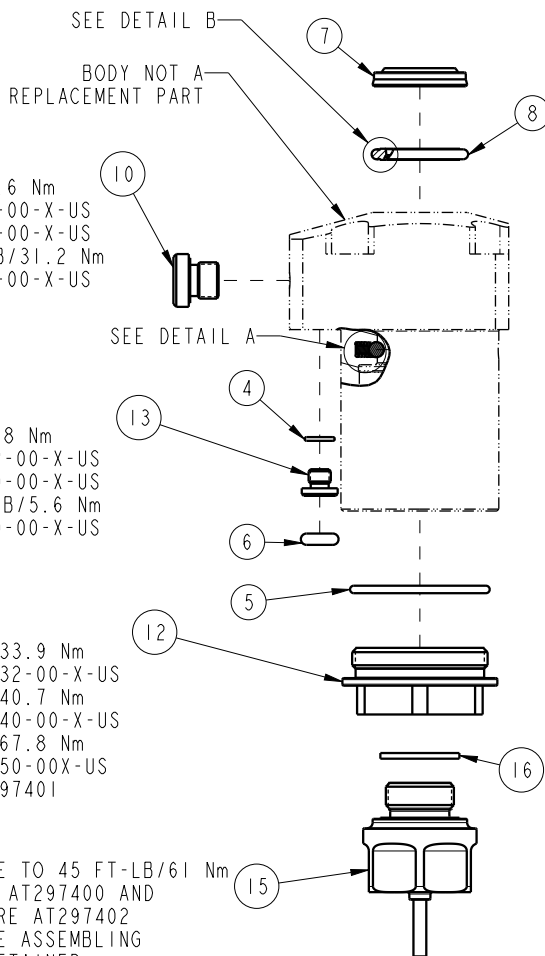
A

TORQUE TO
10 FT-LB/13.6 Nm
FOR L1-4032-00-X-US
AND L1-4040-00-X-US
AND 23 FT-LB/31.2 Nm
FOR L1-4050-00-X-US

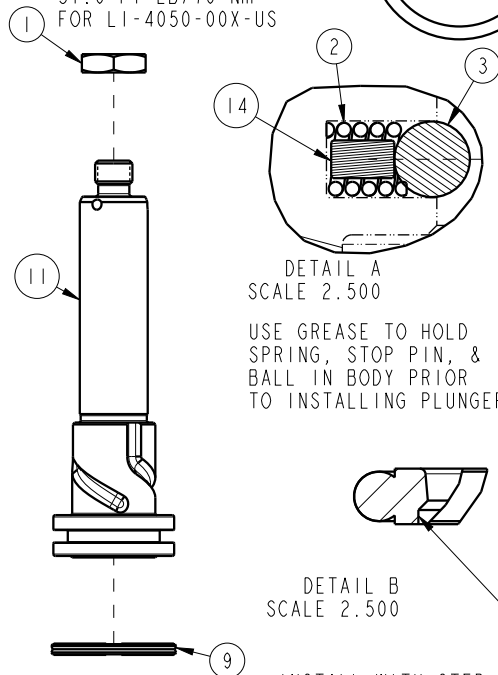
TORQUE TO
25 FT-LB/2.8 Nm
FOR L1-4032-00-X-US
AND L1-4040-00-X-US
AND 50 FT-LB/5.6 Nm
FOR L1-4050-00-X-US

TORQUE TO
25 FT-LB/33.9 Nm
FOR L1-4032-00-X-US
30 FT-LB/40.7 Nm
FOR L1-4040-00-X-US
50 FT-LB/67.8 Nm
FOR L1-4050-00X-US
USING AT297401

TORQUE TO 45 FT-LB/61 Nm
USING AT297400 AND
FIXTURE AT297402
BEFORE ASSEMBLING
THE RETAINER



TORQUE TO
16.2 FT-LB/22 Nm
FOR L1-4032-00-X-US
25.8 FT-LB/35 Nm
FOR L1-4040-00-X-US
51.6 FT-LB/70 Nm
FOR L1-4050-00X-US



USE GREASE TO HOLD
SPRING, STOP PIN, &
BALL IN BODY PRIOR
TO INSTALLING PLUNGER

DETAIL B
SCALE 2.500

INSTALL WITH STEP
TOWARDS BOTTOM CAP

PARTS LIST



ASSEMBLIES AFFECTED
L1-4032-00-X-US
L1-4040-00-X-US
L1-4050-00-X-US

PARTS LIST, ASSY, SC, TF, 7MP_a, 32B, 40B, 50B

SIZE A
LPLI461

REV A

SHEET 1 OF 1

FORM FEG035_PL_ASIZE, REV. B

1

2